

Name \_\_\_\_\_

Answer the following questions about the map on the **bottom**.

\* LABEL YOUR CONTOUR LINES!

What type of map is this? \_\_\_\_\_

What is the contour interval? \_\_\_\_\_

Label the elevation of every contour line lightly in pencil.

Usually every \_\_\_\_\_ contour line is darker.

What is the exact elevation of the following points? Point A \_\_\_\_\_  
Point B \_\_\_\_\_

What is the approximate elevation of the following points? Point C \_\_\_\_\_  
Point F \_\_\_\_\_

Explain why you can determine the exact elevation for points A and E but only approximate elevations for points C and F: \_\_\_\_\_

Which point is located in a depression? \_\_\_\_\_

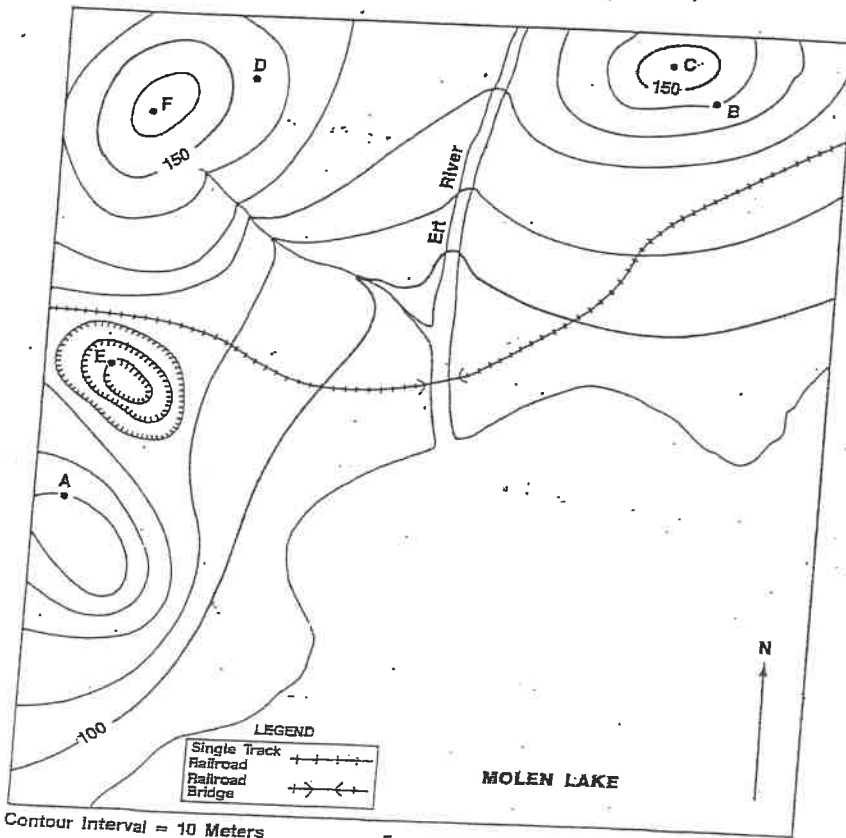
How many hills are shown on the map? \_\_\_\_\_

Which points are at the tops of hills? \_\_\_\_\_

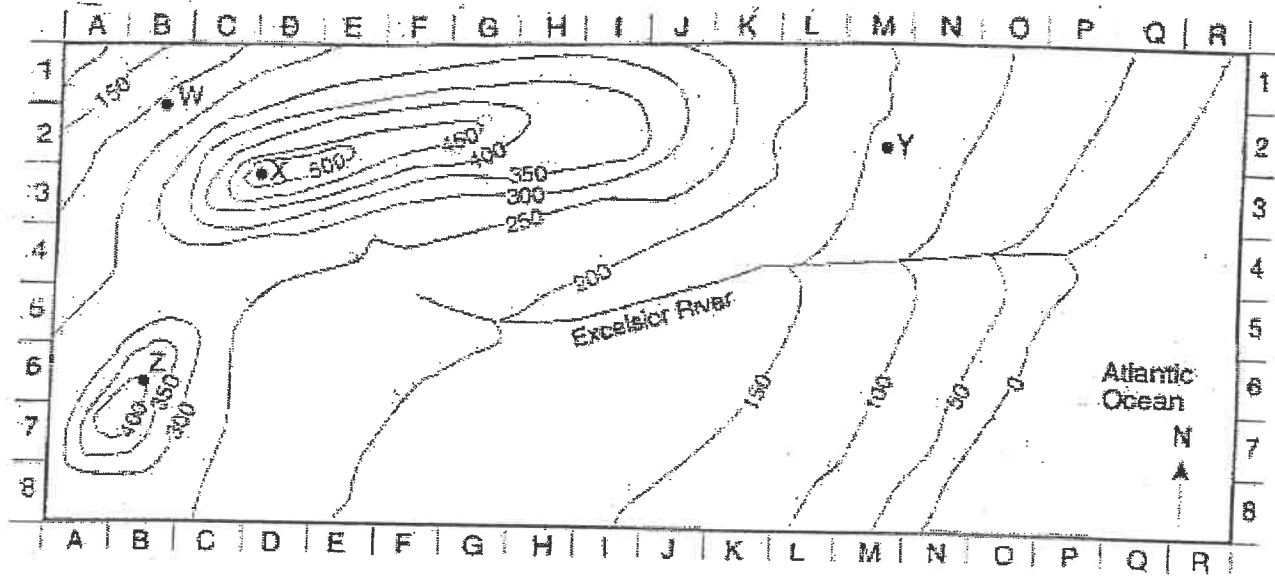
Which point has the highest elevation? \_\_\_\_\_

Which points have the same elevation? \_\_\_\_\_

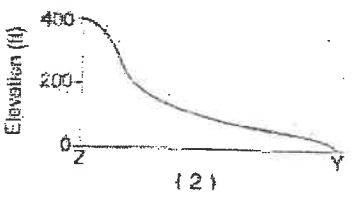
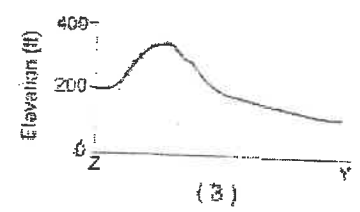
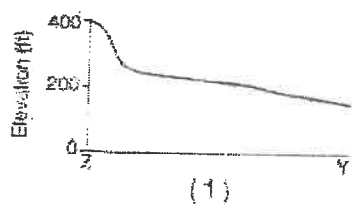
What direction is the Ert River flowing? \_\_\_\_\_



The topographic map below represents a location in North America. A grid system of letters and numbers along the edges of the map is provided to assist in finding locations. Elevations are expressed in feet.



- What is the approximate elevation at grid location 7-I?  
 A 140 ft      C 200 ft  
 B 170 ft      D 230 ft
- What is a possible elevation at point X (grid location 3-D)?  
 A 488 ft      C 558 ft  
 B 548 ft      D 598 ft
- If a person at point W (grid location 2-B) travels uphill, in which direction is the person traveling?  
 A northwest    C southwest  
 B northeast    D southeast
- What is the elevation difference of the entire length of the Excelsior River?  
 A 0 ft          C 225 ft  
 B 200 ft        D 250 ft
- Which profile best represents the topography along a straight line from point Z (6-B) to point Y (2-M)?



5

